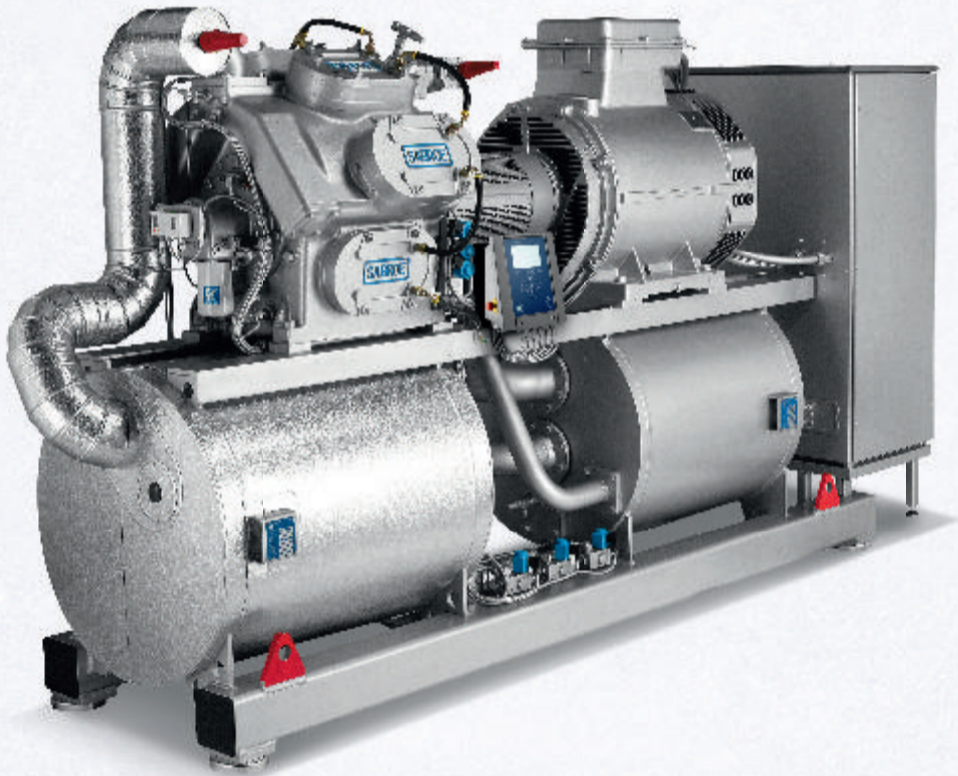


Sabroe ChillPAC

– packaged ammonia chillers



ChillPAC with variable-speed reciprocating compressor



ChillPAC featuring SABCube variable-speed screw compressor

Capacity

From 200–1400 kW

Future-compatible refrigerant

60% smaller refrigerant charge compared with conventional ammonia chiller

Maximum efficiency

The flooded evaporator system offers the most reliable operation with a very low operating cost

Compact

60% smaller compared with conventional ammonia chiller

Applications

Ideal for a wide range of refrigeration applications (commercial market, process cooling, air conditioning).



**BY JOHNSON
CONTROLS**