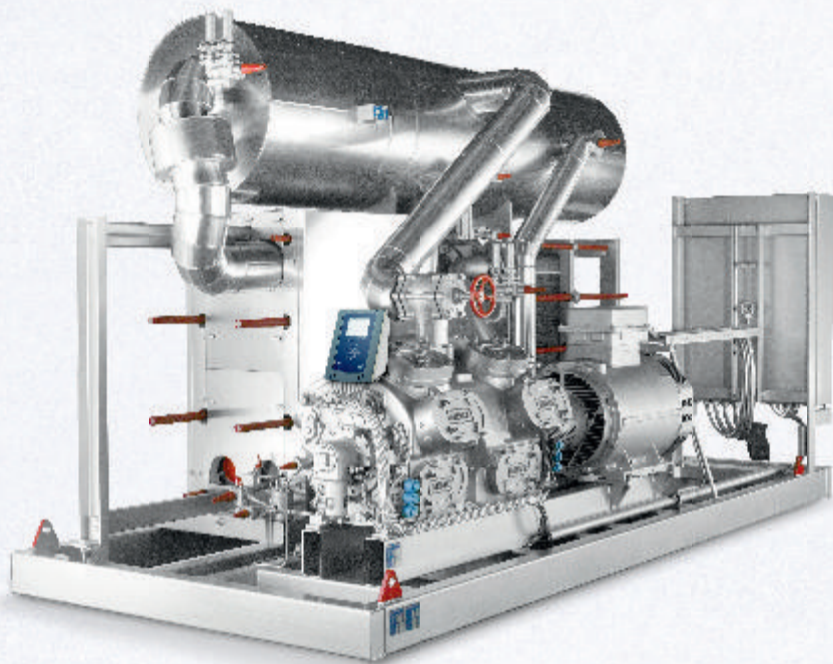
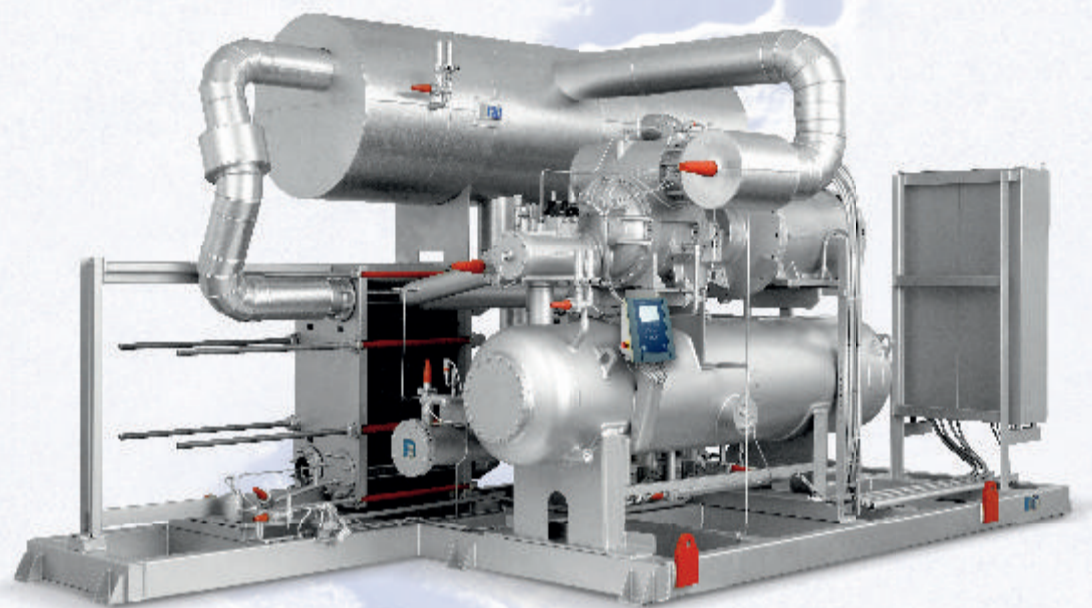


# Sabroe PAC

– packaged ammonia chillers



*PAC chillers with reciprocating compressors*



*PAC chillers with screw compressors*

## **Capacity**

From 100 to 6000 kW or more on request

## **Future-compatible refrigerant**

Ammonia has the highest COP available for chillers

## **Maximum energy efficiency**

The flooded evaporator system offers the most reliable operation with a very low operating cost. Variable-speed drive as an option

## **Applications**

Standard or customized for a wide range of applications (food & beverage, process cooling, district cooling).



**SABROE**

BY JOHNSON  
CONTROLS